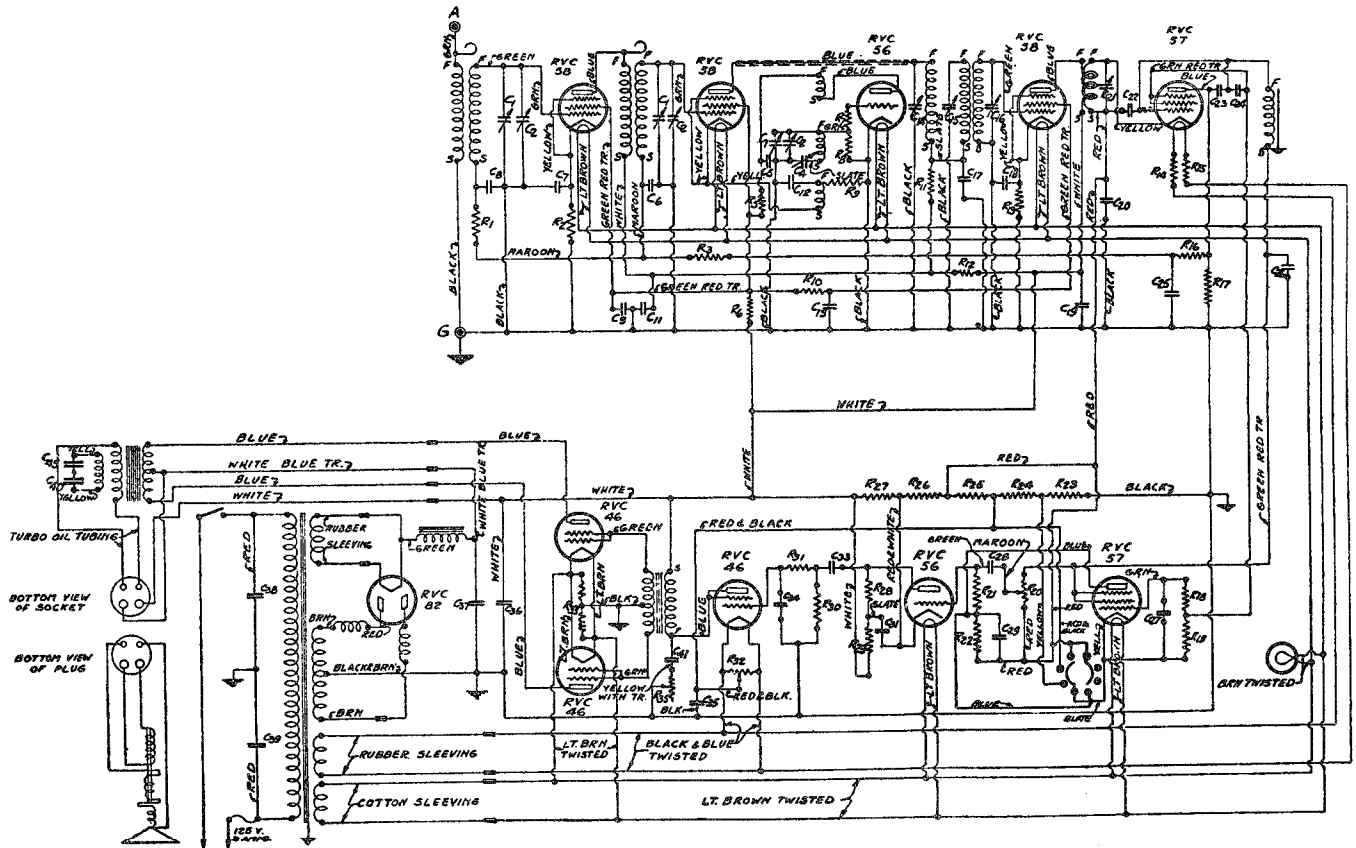
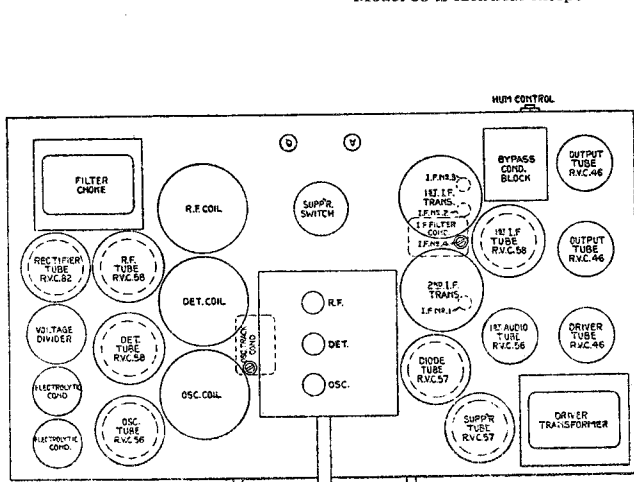


CANADIAN MARCONI COMPANY

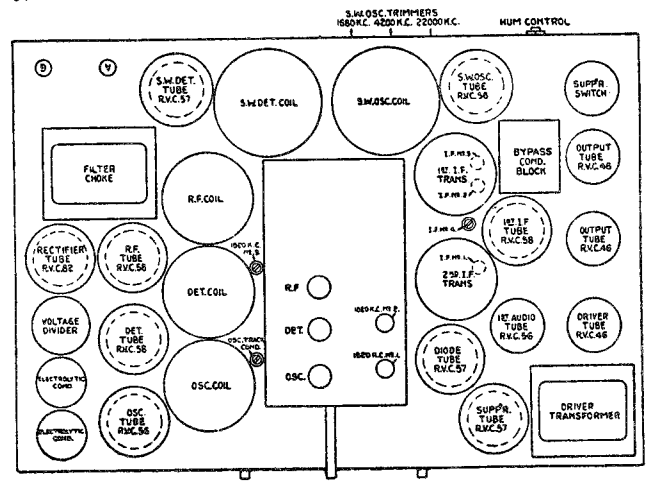
SERVICE DATA—MODELS 35-36-37-38



Model 35
Model 38 is identical except for Transformer Assy, which is the same as Model 37.



Models 35 and 38



Models 36 and 37

ALIGNMENT—MODELS 35-36-37-38

Alignment:—Always proceed in the following order:—(1) I.F. Trimmers, (2) Broadcast Band Trimmers and Tracking Condenser, (3) (In Models 36 and 37) S/W I.F. Trimmers, (4) S/W Tracking Condensers.

Turn volume control on full and reduce output of Test Oscillator to give a weak signal. An output meter must be used to secure correct alignment of all trimmers.

I.F. Trimmers:—Connect a 175 K.C. Test Oscillator to the grid cap of the 58 1st detector and chassis. Adjust in order:—I.F. No. 1, I.F. No. 2, I.F. No. 3, I.F. No. 4.

B.C. Trimmers:—First see that the dial reads 525 with the gang condenser plates fully meshed. Supply a 1,400 K.C. signal to A and G, set dial at 1,400 K.C. and adjust in order, Oscillator, Detector and R.F. Trimmers. Set the Test Oscillator and receiver to 600 K.C. and adjust oscillator tracking condenser.

MODELS 36 AND 37

1,520 K.C. (S/W I.F.) Trimmers:—Connect Test Oscillator to grid cap of S/W Det. tube and chassis and adjust it to supply a 1,520 K.C. signal. If this frequency is not available, set at 760 K.C. Switch receiver to Yellow Band and set dial at maximum. Adjust in order, 1,520 K.C. No. 1, No. 2 and No. 3.

S/W Osc. Tracking Condensers:—Connect a S/W Test Oscillator to A and G and adjust Tracking condensers for each band as shown below. The gang condenser should be rocked back and forth while adjusting, in order to obtain the greatest output.

Band	Alignment Freq.	Dial Reading Trim.*
(1) S. S/W RED	12,000 K.C.	81 Approx. Left
(2) M. S/W YELLOW	4,500 K.C.	93 " Center
(3) L. S/W GREEN	1,650 K.C.	90 " Right

*Trimmer position when looking at rear of chassis.

CONDENSERS FOR MODELS 35-36-37-38

Ref.	Part No.	Capacity	Type No.	Ref.	Part No.	Capacity	Type No.
C1	1401	21-370 Mmf, 5 Gang Tuning.....	*35122	C27	1414	.01 Mf 200 V. Tubular.....	
C1	1402	21-370 " 3 " ".....	†35193	C28	1415	.02 " Mica.....	36041
C2	60	" Trimmer for C1.....		C29	1416	.05 " 300 V. Tubular.....	
C3	1403	250 " Mica.....	*	C31	1413	1. " 300 V. Bypass block...	35699
C4	1404	850 " Osc. Tracking.....	35681	C33	1415	.02 " Mica.....	36041
C5	1405	.1 Mf 300 V. Tubular.....		C34	1417	500 Mmf ".....	
C6	1406	.05 " 200 V. ".....		C35	1413	1. Mf 200 V. Bypass block...	35699
C7	1407	.1 " 200 V. ".....		C36	1418	8 " 450 V. Electrolytic.....	2251
C8	1406	.05 " 200 V. ".....		C37	1418	8 " 450 V. ".....	2251
C9	1408	.1 " 300 V. ".....		C38}	1419	{ .02 " Line filter.....	}35248
C10	1408	.1 " 300 V. ".....	*	C39}			
C11	1408	.1 " 300 V. ".....		C40	1420	.004 " Mica.....	
C12	1407	.1 " 200 V. ".....		C41	1421	.2 " 300 V. Tubular.....	
C13	1408	.1 " 300 V. ".....		C42	1401	13-268 Mmf 5 gang tuning.....	*35122
C14	1409	6-70 Mmf I.F. Trimmer No. 4....	35233	C43	1422	360 " Mica.....	*
C15	1410	6-70 " " " No. 3....	35217	C44	1403	250 " ".....	*
C16	1411	6-70 " " " No. 2....	35217	C45	1423	.004 Mf ".....	*
C17	1412	.004 Mf 300 V. Tubular.....		C46	1424	.002 " ".....	*
C18	1413	.1 " 200 V. Bypass block...	35699	C47	1408	.1 " 300 V. Tubular.....	*
C19	1408	.1 " 300 V. Tubular.....		C48	1408	.1 " ".....	*
C20	1406	.05 " 200 V. ".....		C49	1425	308 Mmf 22,000 K.C. Tracking...	*35611
C21	1414A	6-70 Mmf I.F. Trimmer No. 1....	35700	C50	1426	665 " 4,200 K.C. ".....	*35682
C22	1403	250 " Mica.....		C51	1427	248 " 1,680 K.C. ".....	*35255
C23	1414	.01 Mf 200 V. Tubular.....		C52	1428	4-20 " 1,520 Trimmer No. 1...	*36241
C24	1414	.01 " 200 V. ".....		C53	1429	6-70 " 1,520 " No. 2...	*35884
C25	1415A	.001 " Mica.....		C54	1430	6-70 " 1,520 " No. 3...	*35884
C26	1403	250 Mmf ".....					

Bypass block, Part No. 1413, contains condensers C18, C31, C35.

*Models 36, 37 only.

†Models 35 and 38 only.

RESISTORS FOR MODELS 35-36-37-38

Ref.	Part No.	Resistance	Type No.	Ref.	Part No.	Resistance	Type No.
R1	1441	100,000 Ohms 1/2 Watt	Models 35 & 38 only	R21	1452	1 Meg. Ohms 1/2 Watt	
R2	1442	400 " 1/2 "	"	R21	1452	1 " " 1/2 "	
R3	1441	100,000 " 1/2 "	"	R23	1454	315 " 1 "	
R4	1443	5 Meg. " 1/2 "	Models 36-37 only	R24	1455	210 " 1 "	
R5	1444	1,000 " 1/2 "	"	R25	1456	485 " 1 "	
R6	1445	15,000 " 1 "	"	R26	1457	225 " 1 "	
R7	1446	2,500 " 1/2 "	"	R27	1525	6,350 " " "	Pot. Divider
R8	1447	40,000 " 1/2 "	"	R28	1449	10,000 " 1/2 "	
R9	1448	2,500 " 1/2 "	"	R29	1449	10,000 " 1/2 "	
R10	1444	1,000 " 1/2 "	"	R30	1458	200,000 " 1/2 "	
R11	1449	10,000 " 1/2 "	"	R31	1459	50,000 " 1/2 "	
R12	1444	1,000 " 1/2 "	"	R32	1531	6 " " "	Hum Control
R13	1442	400 " 1/2 "	"	R33	1460	20 " " "	Center tapped
R14	1450	.525 " " "	35841	R35	1588	100,000 " " "	Tone control
R15	1450	.525 " " "	35841	R36	1452	1 Meg. " 1/2 "	Models 36-37 only
R16	1451	500,000 " 1/2 "	"	R37	1461	250,000 " 1/2 "	" " "
R17	1452	1 Meg. " 1/2 "	"	R38	1449	10,000 " 1/2 "	" " "
R18	1452	1 " " 1/2 "	"	R39	1462	29,000 " 1/2 "	" " "
R19	1453	2 " " 1/2 "	"	R40	1458	200,000 " 1/2 "	" " "
R20	1589	100,000 " " "	Vol. Control				

VOLTAGE READINGS—MODELS 35-36-37-38

	VOLTAGES to Cathode				VOLTAGES to Chassis			VOLTAGES to Cathode or Fil.			
	Grid	Plate	Screen	Suppressor	Cathode	Heater	Grid	Plate	Screen	Suppressor	
B.C.-R.F.....	0	215	90	0	*S/W R.F.5	230	30	0	
1st Det.....	0	185	85	0	6	..	*S/W Osc. ... 25	165	
B.C. Osc.....	0	90	Driver ... 18	230	225	..	
I.F.....	0	230	90	0	3	..	Power ... 0	380	0	..	
Diode.....	+13	-18	-18	-18	40	25	Rect.	420	
Suppressor.....	0	9	9	9	15	..					
1st. A.F.....	.1	130	44	.1					

*Models 36-37 only.

PARTS LIST

Part No.	Article	For Model 35, 36, 37	Type No.	Part No.	Article	For Model 35, 36, 37	Type No.
1470	Base for tube shield, 4 pin.....	"	30125	1532B	Insulation, for Chassis Base.....	"	36603
1471	Base for tube shield, 5 and 6 Pin..	"	29831	1532C	" " Trans. Assy.....	"	36824
1472	Belt, rubber for Drive drum.....	"	35591	1533	" Tuning.....	"	KRC-B37B-1 3/8"
1473	Bracket for spindle.....	"	35242	1534	Knobs, Control.....	"	KRC-B37B1"
1474	" For Pilot Lamp.....	"	35769	1535	" Wave change, S/W.....	"	" " 1 1/8"
1475	" Assy " ".....	"	35440	1536	" Suppressor, Switch.....	"	36404
1476	Bushing for Terminal "A".....	"	23959	1537	Label, valve location.....	"	35798
1477	" " Hum control.....	"	36021	1538	" " ".....	"	35799
1478	Cabinet, Model 35.....	"	35715	1539	Panel, Assy for fuse.....	"	35351
1479	" " 36.....	"	35716	1540	Plate, metal rating 60 cycle.....	"	35805
1480	" " 37.....	"	35717	1541	" " " 60 ".....	"	35820
1481	Can, S/W Det. Coil shield.....	"	35247	1542	" " " 60 ".....	"	35822
1482	" Osc. Coil ".....	"	35265	1543	" " " 25 ".....	"	35806
1483	" R.F. Coil ".....	"	35246	1544	" " " 25 ".....	"	35821
1484	" Det. ".....	"	35246	1545	" " " 25 ".....	"	35823
1485	" Osc. ".....	"	35263	1546	" Cover for fuse.....	"	35354
1486	" Tube shield, plain type.....	"	29832	1547	" Indicating, for Sup. Switch.....	"	36403
1487	" " " dome ".....	"	35215	1548	" Base for chassis.....	"	35503
1488	" " " closed ".....	"	35491	1549	" " " ".....	"	35504
1489	" Potential divider shield.....	"	35718	1550	" " " Transformer Assy..	"	35148
1490	Cable Assy, power, 11 wire.....	"	35736	1551	Plaques.....	"	30039
1491	" Output 4 ".....	"	35737	1552	" " ".....	"	35846
1492	Chassis, less valves.....	"	35250	1553	Receptacle Assy Pilot Lamp, single	"	35802
1493	" " ".....	"	35251	1554	" " " triple.....	"	35446
1494	Choke, I.F. Assy with condenser..	"	35231	1555	" Only.....	"	29813
1495	" " Coil only.....	"	35701	1556	Resistor Assy, large.....	"	35578
1496	" Filter.....	"	35493	1557	" " small.....	"	35617
1497	" Rectifier.....	"	35686	1558	Ring, Insulating for 4 pin socket..	"	29804
1497A	" R.F.....	"	35679	1559	" " for 5 & 6 ".....	"	29803
1498	Clamp, for speaker plug.....	"	31339	1560	Shield for 3 gang condenser.....	"	35768
1499	" for drive belt.....	"	35590	1561	" " 5 ".....	"	35855
1500	Coil Assy, S/W Det. with can.....	"	35595	1562	Socket 4 pin.....	"	29858
1501	" Only, " ".....	"	35356	1563	" 5 ".....	"	29857
1502	" Assy, " Osc. with can.....	"	35394	1564	" 6 ".....	"	34455
1503	" Only, " ".....	"	35370	1565	Spindle.....	"	35573
1504	" Assy, R.F. ".....	"	35375	1566	Spring for S/W shield cans.....	"	35390
1505	" R.F. ".....	"	35850	1567	" " R.F. ".....	"	35391
1506	" Only, R.F.....	"	35131	1568	Speaker No. 12501 Mk. 35.....	"	35399
1507	" R.F.....	"	35847	1569	" " Mk. 36.....	"	35392
1508	" Assy, 1st Det. with can.....	"	35374	1570	" No. 10021 Mk. 37 (Red Spot)	"	35393
1509	" Only " ".....	"	35132	1571	" No. 10020 Mk. 37 (Plain)	"	35393
1510	" Assy Osc. ".....	"	35396	1571A	" " Mk. 38.....	"	P8591
1511	" Only " ".....	"	35397	1571B	" " Mk. 38.....	"	P8592
1512	" Assy, for I.F. Trans. No. 1.....	"	35702	1572	Stud for gang condenser.....	"	35803
1513	" " I.F. Trans. No. 2.....	"	35527	1573	Switch Assy Wave-change.....	"	35750
1514	" Field, for speaker (M35 only)..	"		1574	" " Suppressor.....	"	36396
1515	" " " ".....	"		1575	" On-Off.....	"	36778
1516	" " " ".....	"		1576	Terminal "A".....	"	36343
1516	" " " " Mk. 38.....	"		1577	" " "G".....	"	36344
1517	Cone Assy for speaker Mk. 35.....	"		1578	Transformer I.F. No. 1.....	"	35232
1518	" " " " Mk. 36.....	"		1579	" " No. 2.....	"	35524
1519	" " " " Mk. 37 (Red Spot)	"		1580	" Assy, Power 25 cycle (M35 & 36)	"	35144
1520	" " " " Mk. 37 (Plain)	"		1581	" " " 25 " (M37 & 38)	"	35720
1520A	" " " " Mk. 38 (P8591)	"		1582	" " " 60 " (M35 & 36)	"	35149
1520B	" " " " Mk. 38 (P8592)	"		1583	" " " 60 " (M37 & 38)	"	35731
1521	Dial Assy complete.....	"	35335	1584	" Only 25 " 35, 36, 37	"	36789
1522	" " " ".....	"	35336	1585	" " 60 ".....	"	36790
1523	" Only.....	"	35377	1586	" Driver, (Audio).....	"	35174
1524	" " " ".....	"	35378	1587	" Output (M35 & 36)..	"	35464
1525	Divider, Potential, Har. and Hin. 6,350 Ohms.....	"		1588	" " (M37 & 38)..	"	35767
1526	Drum only, for dial.....	"	36467	1589	Tone Control with switch.....	"	35926
1527	" " " ".....	"	36468	1589A	" " less switch.....	"	35900
1528	" Assy, friction drive.....	"	35618	1590	Volume " ".....	"	35900
1529	" Only, less belt.....	"	35547	1591	Washer insulating for Hum control	"	36020
1530	Fuse, 3 amp. Electrolier G.E.....	"	132767	1592	" " " Term. "A".....	"	30697
1531	Hum control, 6 Ohm Carter.....	"	AP6	1593	" " For drive spindle.....	"	29859
1532	Insulation for Rect. Socket.....	"	35636	1594	" Rubber, upper for gang cond.	"	32959
1532A	" " Chassis Base.....	"	36602	1595	" " middle " ".....	"	32960
				1596	" " lower " ".....	"	32958

Note—Model 35 parts are used in Model 38 except as indicated.

For best results . . . Always use . . .

GENUINE Marconi PARTS